

S.W. 1/4  
SECTION 8, T.6N., R.1W., S.L.B. & M.  
IN OGDEN CITY & TOWN OF HARRISVILLE

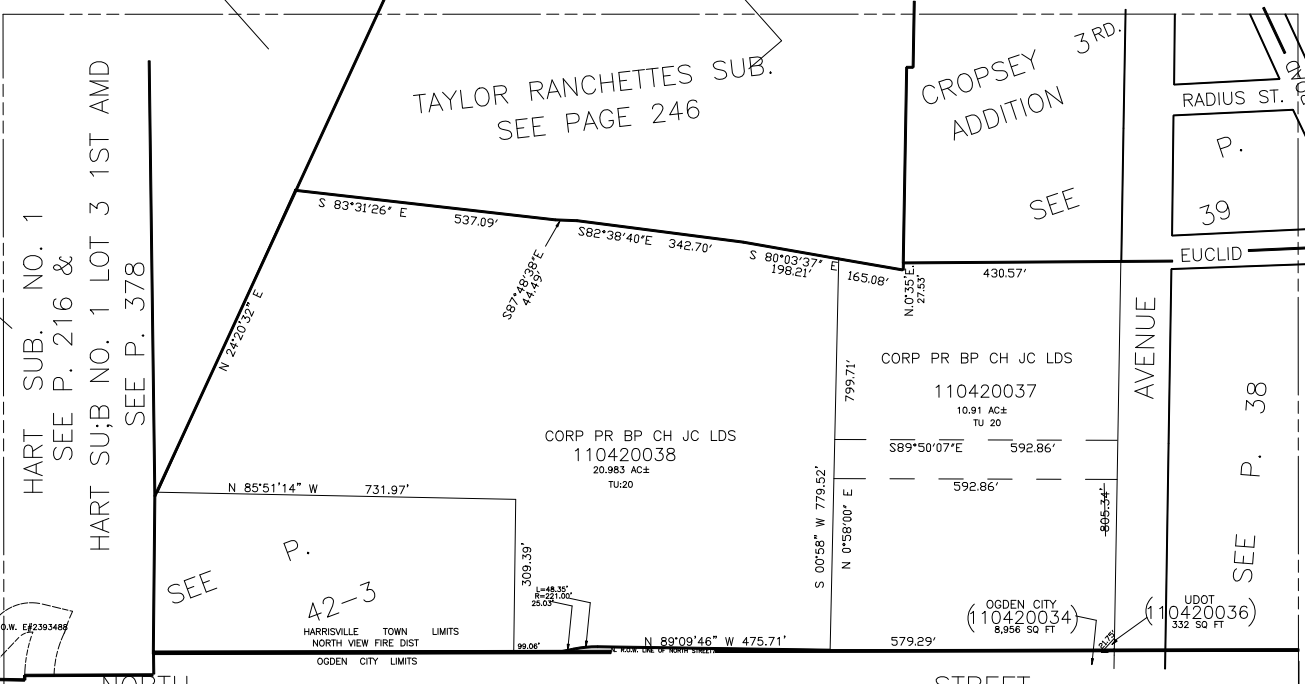
TAXING UNIT: 20, 25

SCALE 1" = 200'

ALSO SEE PAGES 42-1, 2, 3,

SEE P. 33-2

SEE PAGE 33



HART SUB. NO. 1  
SEE P. 216 &  
HART SU;B NO. 1 LOT 3 1ST AMD  
SEE P. 378

TAYLOR RANCHETTES SUB.  
SEE PAGE 246

CROPSEY  
ADDITION

P.  
39

CORP PR BP CH JC LDS  
110420037  
10.91 AC±  
TU 20

CORP PR BP CH JC LDS  
110420038  
20.963 AC±  
TU:20

SEE P. 38

SEE

P.

42-3

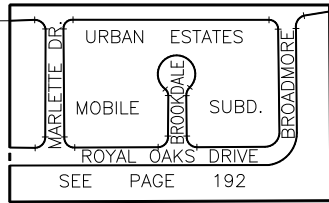
HARRISVILLE TOWN LIMITS  
NORTH VIEW FIRE DIST  
OGDEN CITY LIMITS

(OGDEN CITY)  
(110420034)  
8,956 SQ FT

UDOT  
(110420036)  
332 SQ FT

SEE PAGE 36

SEE P. 25



SEE P. 42-2

SEE P. 42-1

SEE

P. 43



PARKWOOD ESTATES  
NO. 1

PINGREE STREET  
SEE PAGES  
155 & 156